



St. Hilary of Poitiers School TUESDAY NEWSLETTER

January 12, 2010

NEWSLETTER CONTENTS:

- Father/Daughter Dance Notice
- Market Day/January
- Snow Closing Information!!!

ENVELOPE CONTENTS:

- SHS Newsletter
- St. Hilary Feast Day Flyer
(sent electronically ONLY!!!)
- Father/Daughter Dance Flyer
(sent electronically ONLY!!!)
- SHS Pampered Chef Flyer
(sent electronically ONLY!!!)

ANNOUNCEMENT:

**SHS Pampered Chef
Fundraiser**

Friday, January 29th @ 7 PM
St. Hilary's Parish Center

(please see **electronic** flyer
in this week's
Tuesday Envelope!)

LOOKING AHEAD:

- Jan. 13 St. Hilary of Poitiers Feast Day (see flyer)
- Jan. 15 CYO Dance (7th/8th Gr.) - 7:00 to 10:00 p.m.
- Jan. 18 Martin Luther King, Jr. Day – **NO SCHOOL**
- Jan. 21 Happy Birthday Mrs. Pipito (Computer)!!
- Jan. 22 MLK Young Audience Performance at SHS
Father Daughter Dance - 7:00 to 9:30 p.m.
- Jan. 25 Happy Birthday Mrs. Carlo (Art)!!
- Jan. 27 First Reconciliation Parent Mtg. - 7:00 p.m.
- Jan. 29 SHS Pampered Chef Fundraiser - 7:00 p.m.
(held in Parish Center)
- Jan. 31 SHS Open House
Catholic School's Week Begins!!!



WELLNESS WEDNESDAY WALKERS

Wed. 1/13:

Serpiello
Rehiel
Congdon

Wed. 1/20

Brislin
Dominiak
Rossiter

Want to become a Wednesday Walker? Contact Cathy
Congdon @ cac1207@comcast.net.

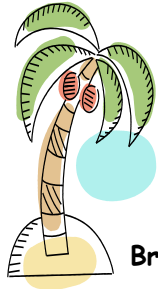
Next Week's Lunch/Yard Duty Schedule

	MONDAY	TUESDAY	WEDNESDAY	THURSDAY	FRIDAY
	18 – JAN	19 – JAN	20 – JAN	21 – JAN	22 – JAN
YARD		McMonagle	Playford	Zeidler	Savidge
YARD		Moore	Barry	Owens	Watson
BOX	OFF	Ciolko	Radtke	Beavers	Serpiello
KITCHEN		Greenberg	Shissler	McCrea	Mulvihill
KITCHEN		Bielecki	Robbins	Morrissy	Agnew

PLEASE VISIT OUR SCHOOL WEBSITE (www.sainthilaryschool.com) FOR MORE UP-TO-DATE INFORMATION.



NOTES & NEWS



It's the FATHER DAUGHTER DANCE

And the theme is set!

We're having a Luau -you'll never forget!

Please dress up Hawaiian

As you've done in the past

For a night that will be a tropical blast!

Bring Dad, Grandpop, an Uncle or Someone Special
for a night of Dancing & Fun!!

Where: St. Hilary School

When: Friday, January 22, 2010

Time: 7:00 - 9:30 p.m.

Cost: \$10 per family (includes DJ, decorations & picture)



In order to keep costs down, we are again asking for a few donations:

Grades K, 1 & 2: Desserts & fruit

Grades 3, 4 & 5: Appetizers & snacks (pizza rolls, wings, chips, etc)

Grades 6, 7 & 8: Gallons of water & liter bottles of soda

Please send your Family Name and Daughter's Name/Grade to Lisa
Dunn c/o Kerri, Grade 3, by Wednesday, January 20th. Please note
no tickets will be sent home. Your name will be at the door. Thank
you for your continued support!!!!

* * *

MARKET DAY/JANUARY: There's still time to order and receive your
FREE 4-pack of PB&J Grahamwiches with a minimum order of \$40.
Online orders need to be placed by 11 PM on Sat., 1/23/10 at
www.marketday.com or sent into school by Thurs., 1/21/10. Our
school account is #28033. If you have any questions or would like to
volunteer to help, call Cathy Congdon at 215-677-4750 or
cac1207@comcast.net. We appreciate your support and looking
forward to seeing you at our Market Day pick-up on Friday, 1/29
between 3:15 and 4:15.

* * *

SNOW EMERGENCY CLOSINGS

The One Call Now Service call will be sent out to all families when St. Hilary School is closed. The following
will also indicate St. Hilary School is closed:

St. Hilary's School Emergency #382
Abington School Dist. Emergency #301

If we must close the school because of inclement weather, the One Call Now Service call will go out to all
families. Please establish a plan for your children. They must know what to do if school closes early. We
cannot handle individual requests for special transportation. It is the parents' responsibility to decide whether
a child will attend school on an inclement day and to make contingency plans for their travel.

PLEASE MAKE SURE YOUR NUMBERS ARE CURRENT ON THE ONE CALL NOW SERVICE!

SIMPLE WAYS TO HELP:

BOX TOPS FOR EDUCATION
Send to Nora Czerwonka,
c/o Mary, Grade 3



CARTRIDGES FOR KIDS
Send to School Office or
Contact: Jane Kelly
267-879-8661



THE PAPER RETRIEVER
Located in School
Parking Lot
(no cardboard please)





Please Join Us
Celebrate the Feast of
Saint Hilary of Poitiers
January 13, 2010

8 AM Mass

Coffee and Donuts in the Father John P. Cosgrove Parish Center following Mass

Day of Adoration


*Exposition of the Blessed Sacrament
Spend quiet time with Our Lord throughout the day*

Noon Day Prayer

Please join the school children as they share Noon Day Prayer for our Parishioners and Vocations

Evening Prayer 7:00 PM

The Saint Hilary of Poitiers Children's Choir leads us in Prayer and Praise to close our day!



It's the FATHER DAUGHTER DANCE
And the theme is set!
We're having a Luau –you'll never forget!
Please dress up Hawaiian
As you've done in the past
For a night that will be a tropical blast!
Bring your Dad, Grandpop, Uncle or Someone Special
For a night of Dancing and Fun!

Where: St. Hilary School
When: Friday, January 22, 2010
Time: 7:00 – 9:30 p.m.
Cost: \$10 per family
(Cost includes DJ, decorations & picture)

In order to keep costs down we are again asking for a few donations.

Grades K, 1 & 2	Desserts and fruit
Grades 3, 4 & 5	Appetizers and snacks (pizza rolls, wings, chips, etc)
Grades 6, 7 & 8	Gallons of water and liter bottles of soda

Thanks again for your continued support.

Please send your slip & payment to Lisa Dunn c/o Kerri, Grade 3, by Wednesday, January 20th.

Family name: _____
Girl's name(s) & grade: _____

Note: No tickets will be sent home. Your name will be at the door.
See you on the 22nd!

Pampered Chef Fundraiser: To help supply Kitchen Items for St. Hilary's Parish Center

Please come to St. Hilary's Parish Center

Cooking show by Bernadette Dermer

At:

920 Susquehanna Road
Rydal, PA 19046

On

Friday, January 29, 2010 @ 7:00 PM



\$4.50 Value



\$7.50 Value



\$8.50 Value

Choose one of the above
FREE if you spend \$60 or more!

For more information please contact:

Kathy McCrea, Kate Hopkins, Mary Pat Courtney,
Debbie Brazukas, Donna Latanzi or Kathie Hunter